

"...We can't heal the world today but we can begin with a voice of compassion, a heart of love, an act of kindness..."

- Mary Davis

It was unprecedented when a Nipah virus disease (NiV) outbreak was reported from Kozhikode district of Kerala, India on the 19th of May 2018. This was the first NiV outbreak in South India which claimed 17 deaths and 18 confirmed cases as of 1 June 2018. Sister Lini PN from Perambra is a radiant memory in the frontlines of the war against this dreadful disease. She was contracted with Nipah virus and succumbed to death while treating a patient who is believed to be the index patient of the deadly NiV outbreak in northern Kerala. In appreciation of the commendable efforts and services of sister Lini, Hon. President of India Sri Ram Nath Kovind conferred her with National Florence Nightingale award 2019 posthumously. The bus bay at Kallode, Perambra is a memorial in honour of the selfless and caring nurse Lini PN. It is a government project initiated with the LACADF fund of MLA Sri. TP Ramakrishnan and implemented by the Perambra Panchayat.

Location : Kallode, Perambra,
Kozhikode

Year of completion : 2021

Area : 80.65 sq.m



SISTER LINI MEMORIAL

BUS BAY

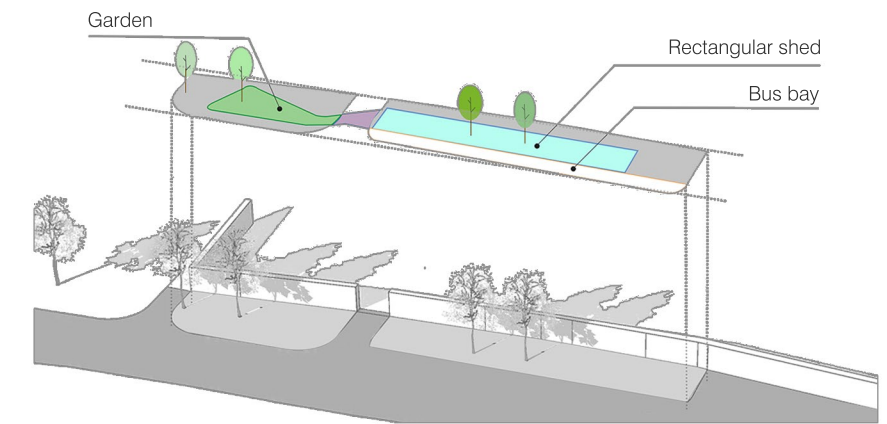
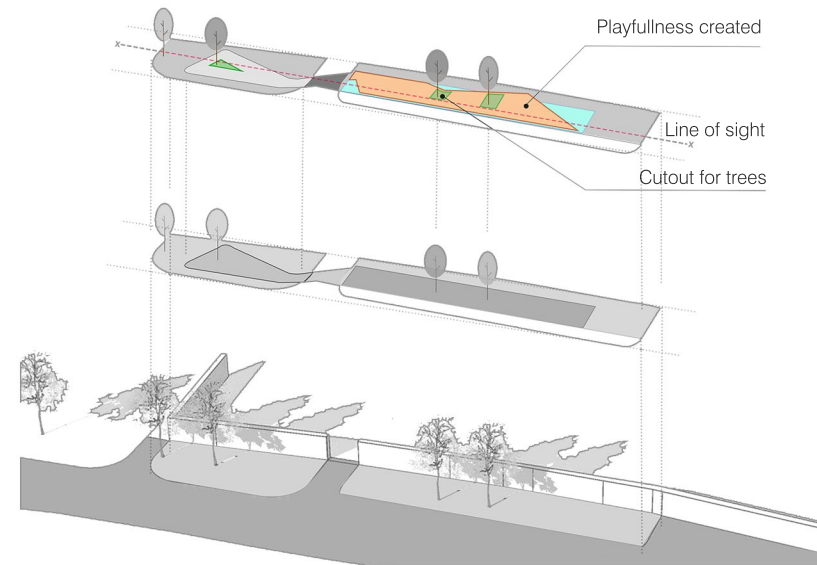


Sajesketha an almost
on the way. അടങ്ങിയിട്ടില്ലാത്ത
നല്ലൊരു മനുഷ്യനായി. സത്യ
നന്മയുടെ അടയാളമായി അവർ
പുറം കണ്ണുവാനെ ഓരോ
കുലത്തെയും അനുസ്മരിപ്പിക്കും
നന്മയുടെ അടയാളമായി
അവർക്ക് പല... with lots
of love... -anna



SITE

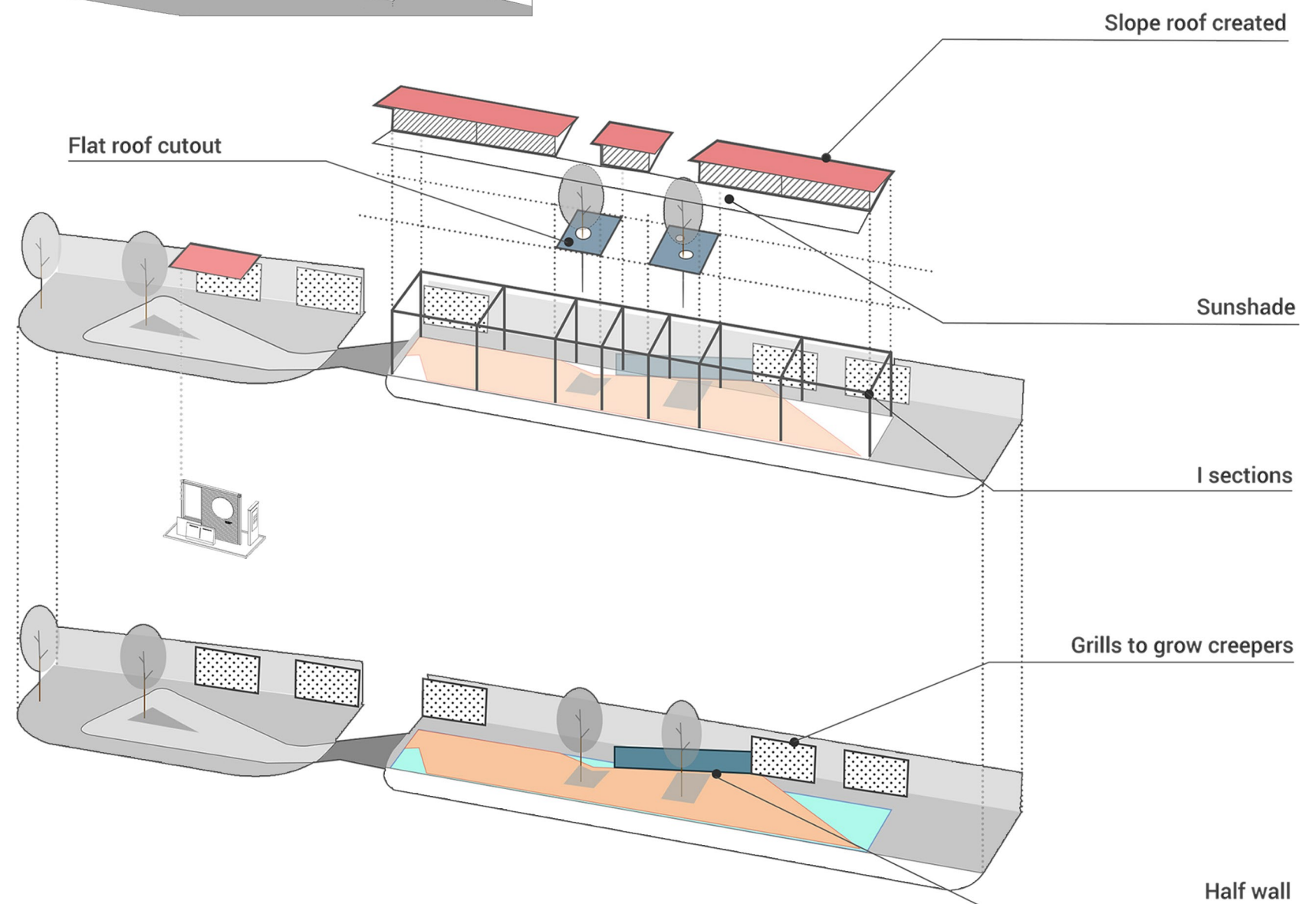
The site is a linear stretch of land in Perambra, abutting the NH 54, near the Govt. Taluk hospital where sister Lini worked. For her daily commute, she had been using the existing bus stop here, which was already in a bad condition. The site is also close to the CKG Memorial Govt. College and Kerala State Backward Classes Development Corporation Ltd Sub Office. There is a shopping complex behind the site, towards the west side. The existing vegetation in the site included an almond tree, a mango tree and two flowering trees.



CONCEPT

"..... am almost on the way. I don't think I will be able to see you again. Sorry. Please raise our children well....."

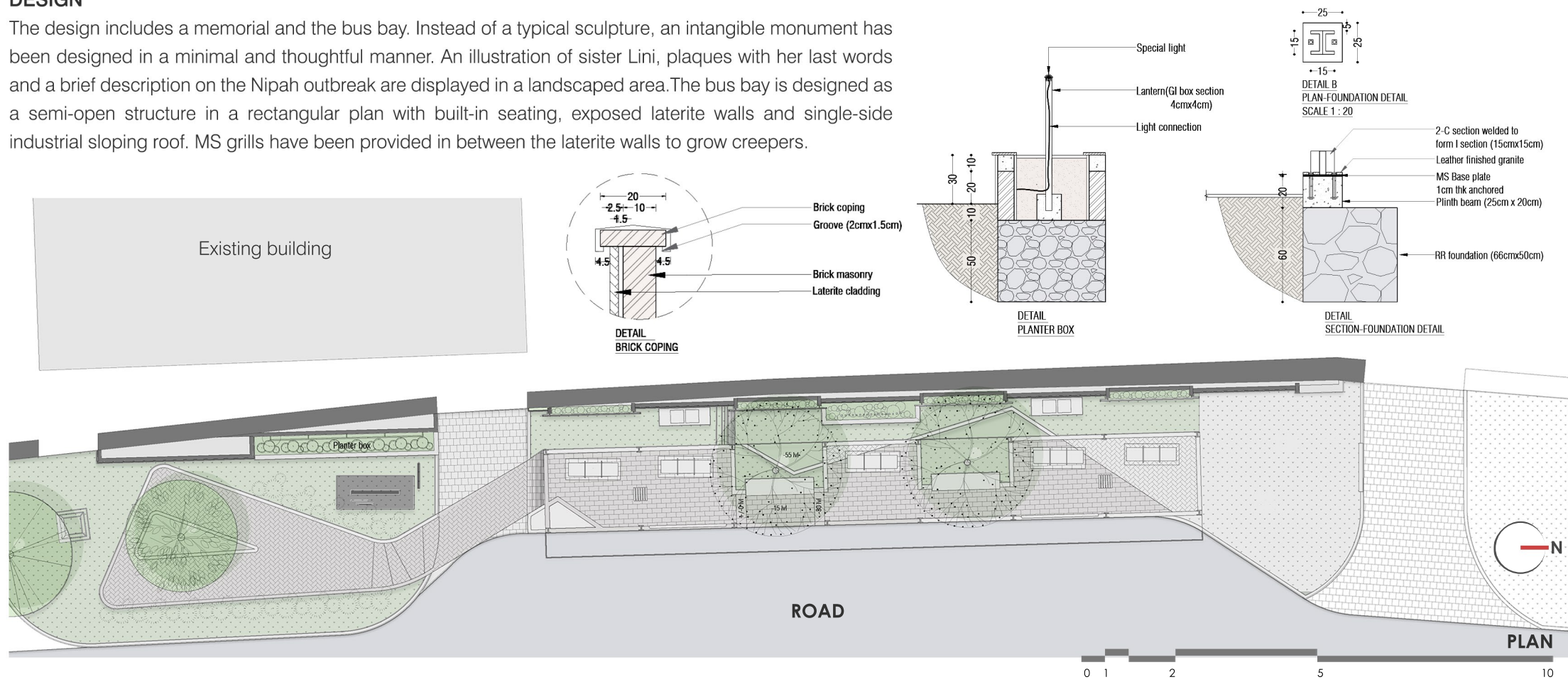
The concept of the memorial is synonymous to the 'journey' reflected in sister Lini's last words. Designed as a place of transit, it reflects how short and impermanent our lives are. More than just a bus stop, it is a living memorial to sister Lini and the 17 people who died due to Nipah. As a public place, it also symbolizes the togetherness of the people witnessed in combating the virus.

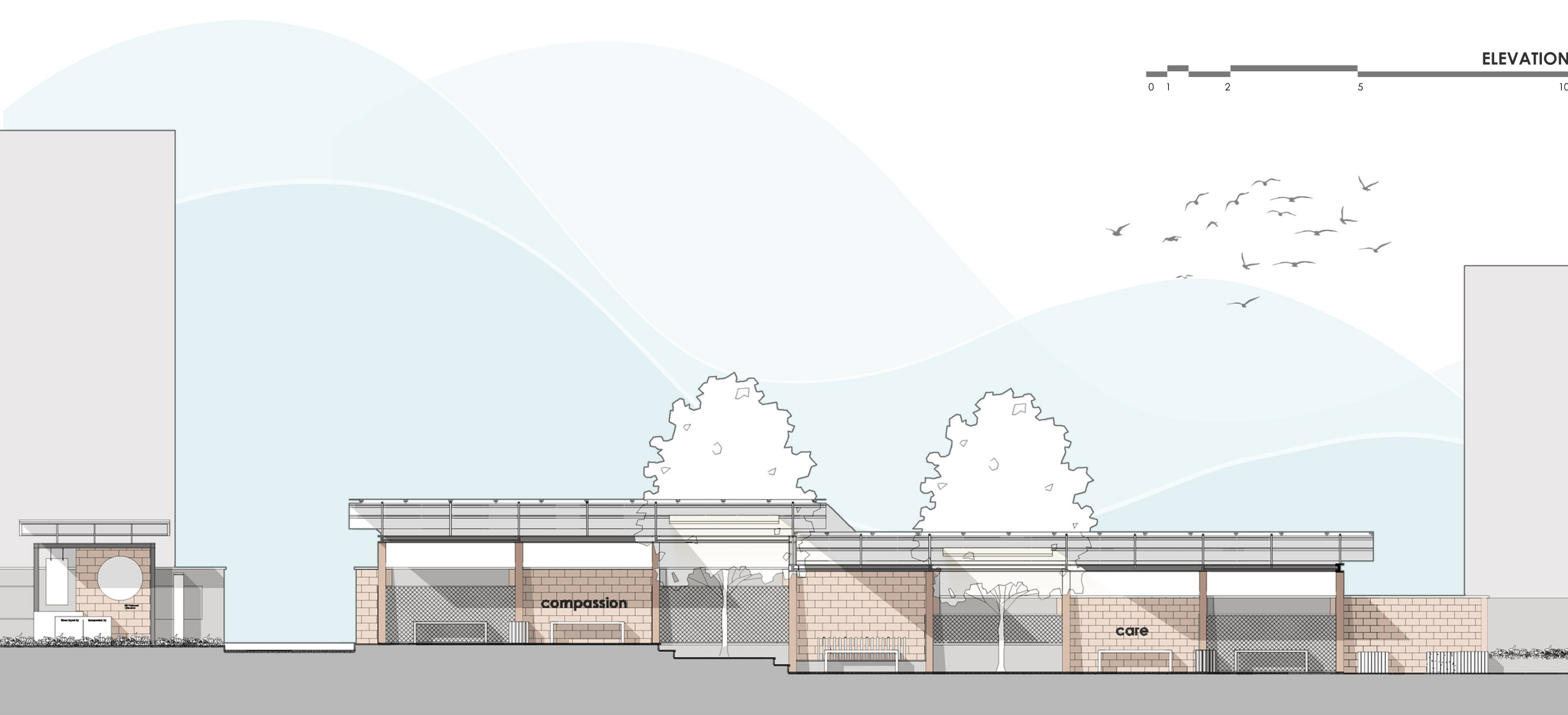




DESIGN

The design includes a memorial and the bus bay. Instead of a typical sculpture, an intangible monument has been designed in a minimal and thoughtful manner. An illustration of sister Lini, plaques with her last words and a brief description on the Nipah outbreak are displayed in a landscaped area. The bus bay is designed as a semi-open structure in a rectangular plan with built-in seating, exposed laterite walls and single-side industrial sloping roof. MS grills have been provided in between the laterite walls to grow creepers.





MATERIAL PALETTE AND BUILT FORM
 The warm palette of materials used include locally available laterite, stone, concrete for the benches, onduline sheet for the roof and terracotta ceiling tiles below. The scale is intimate and the built form merges with the setting.





The planting included along with the bus bay represents the hope and faith in mankind. Half walls with candle-like installations represent the victims of Nipah outbreak. Waste bins with proper segregation have been designed along with the bus bay, which has not been executed yet. Both the structures though disjoint due to site constraints, are unified through the architectural vocabulary. The material palette and roof form are same throughout.



RESPONSE TO THE SOCIETY

Each person who passes through the bus bay will come across the selfless act of sister Lini. The values of her life are depicted as socially relevant messages on the back walls of the bus stop. As a public place of transit, it serves its function by providing quality spaces to the commuters. At the same time, it is a thought-provoking memorial. Waste bins have been designed to prevent public littering, which will imbibe a sense of social and environmental responsibility in the people. Hopefully, this would come to reality in the near future. This would help in bringing up human beings to sensible and responsible fellows.



The shade brings you to us again....